



# MORNING MANTRA



Daily Derivatives & Market Report

NOV 14, 2022

# MARKET COMMENTARY



Local equity markets ended first day of trading week in red zone amid volatility. Domestic markets made cautious start, as traders were worried after central bank showed that the Reserve Bank of India's (RBI's) foreign exchange reserves declined by \$1.1 billion to \$529.99 billion in the week ended November 4. Soon, markets traded in red territory, as traders failed to draw any sense of relief, as Reserve Bank Governor Shaktikanta Das exuded confidence that India will continue to be the fastest growing major economy with a likely growth rate of 7% in 2022-23 on the back of strong macroeconomic fundamentals and financial sector stability. Besides, India's industrial production, measured in terms of the Index of Industrial Production (IIP), expanded by 3.1 per cent in September 2022, boosted by manufacturing, mining and power sectors. It had expanded by 4.4 per cent in September 2021.

Indices continued their downward move in afternoon session, as sentiments remained down-beat after private report stated that asset management companies mobilised Rs 17,805 crore through 67 new fund offerings (NFOs) in the September 2022 quarter, a 64 per cent decline from the year-ago period, on expensive valuations and high volatility in equity markets. However, losses got restricted to trade near neutral line, as traders took some support after India's inflation based on wholesale price index (WPI) eased further 8.39% in the month of October 2022 as against 10.70% recorded in September 2022, primarily contributed by fall in the price of mineral oils, basic metals, fabricated metal products, except machinery and equipment; textiles; other non-metallic mineral products; minerals etc. But, markets failed to erase all losses and once again extended their losses in last leg of trade, as traders were cautious ahead of October CPI data released to be later in day.

On the global front, European markets were trading higher continuing the previous week's positive tone although gains are limited amid caution over the strength of the region's economic recovery. Asian markets ended mixed as momentum faded from last week's rally on Wall Street amid varied sentiments about coronavirus restrictions easing in China and global interest rate increases. Bach home, in scrip specific, Life Insurance Corporation of India (LIC) ended higher on the back of strong quarterly earnings that the insurance behemoth posted for the July-September period. The company posted a standalone net profit of Rs 15,952 crore for the quarter ended September (Q2), which is sharply higher than the Rs 1433 crore quarterly net profit a year ago.

# MARKET SELFIE



## MARKET SUMMARY

Domestic Indices	Close	Points	% Change
SENSEX	61624.15	-170.89	-0.28
NIFTY	18329.15	-20.55	-0.11
MIDCAP	25478.90	13.70	0.05
SMLCAP	29056.34	71.28	0.25
BSEFMC	15999.73	-208.98	-1.29
AUTO	29902.45	72.30	0.24
POWER	4824.31	-33.67	-0.69
REALTY	3608.86	37.67	1.05
BSE IT	29949.02	229.54	0.77
BANKEX	48058.29	-43.07	-0.09
OIL GAS	19966.31	0.88	0.01
METAL	20443.68	298.73	1.48
INDIA VIX	14.91	0.50	3.47

## ADVANCE - DECLINE

Index	Advance	Decline	Unchanged
NSE	1209	1135	64
BSE	1717	1899	153

## MARKET TURNOVER (₹ in Crs)

Segment	Current	Previous	Net %
BSE CASH	6572	5739	15
NSE CASH	68045	73224	(7)
NSE F&O	124238	174580	(29)

## KEY INDICES RATIOS

INDEX	P/E	P/B	Dividend Yield
NIFTY	21.79	4.31	1.26
SENSEX	23.13	3.40	1.17

# KEY NUMBERS TRACKER



## FII – DII ACTIVITY IN CASH SEGMENT (₹ in Crs)

FII-DII*	Buy	Sell	Net
DII	5841	5794	47
FII	21769	20680	1089

Note: FPI & DII Figures are provisional

## FII ACTIVITY IN DERIVATIVES SEGMENT (₹ in Crs)

FII	Buy	Sell	Net
Index Futures	2305.88	3002.33	(696)
Index Options	737738.51	739410.78	(1672)
Stock Futures	12700.53	13554.42	(854)
Stock Options	12742.08	12715.84	26

## PUT-CALL RATIO

Index	Current	Previous
NIFTY	1.04	1.22
BANK NIFTY	1.03	1.16

## DOLLAR INDEX

Dollar Index	Current	Previous	% Change
DXY	106.97	106.67	0.28

## 10-YEARS G-SEC YIELD

Country	Current	Previous	% Change
INDIA	7.288	7.307	-0.26
USA	3.889	3.829	1.57

## KEY COMMODITIES TRACKER (in \$)

Commodity	Current	Change Points	% Change
Gold	1756.46	-14.19	-0.80
Silver	21.41	-0.17	-0.80
Crude-Oil	88.25	-0.71	-0.80
Brent-Crude	95.40	-0.59	-0.61

# CURRENCY FUTURES & INDEX TRENDS TRACKER



## CURRENCY FUTURES

Expiry	Close	Change Points	% Change
28 NOV -22 USD-INR	81.35	0.45	0.55
28 NOV -22 EUR-INR	83.67	0.57	0.69
28 NOV -22 GBP-INR	95.70	0.81	0.85
28 NOV -22 JPY- INR	57.87	-0.05	-0.09

## INDICES – SUPPORT-RESISTANCE-PIVOT LEVELS

Index	Close	S2	S1	Pivot	R1	R2
NIFTY	18329	18259	18294	18347	18382	18435
SENSEX	61624	61360	61492	61704	61836	62048
NIFTY FUTURES	18370	18304	18337	18396	18429	18488
BANK NIFTY	42077	41825	41951	42091	42217	42357
CNX IT	29849	29467	29658	29802	29993	30136
CNX MIDCAP	31399	31070	31235	31355	31520	31641
CNX SMALLCAP	9752	9631	9691	9731	9791	9831
INDIA VIX	14.91	11.54	13.22	14.25	15.93	16.96

## INDEX TREND ANALYSIS

Index	Daily	Weekly	Monthly
NIFTY	Buy	Buy	Buy
SENSEX	Buy	Buy	Buy
NIFTY FUTURES	Buy	Buy	Buy
BANK NIFTY	Buy	Buy	Buy
CNX IT	Buy	Neutral	Buy
CNX MIDCAP	Neutral	Buy	Buy
CNX SMALLCAP	Buy	Buy	Buy
INDIA VIX	Sell	Sell	Neutral

## SECURITIES BAN IN F&O TRADES FOR 15-11-2022

BHEL, GNFC, PNB, SUNTV

# TECHNICAL VIEWS



## NIFTY

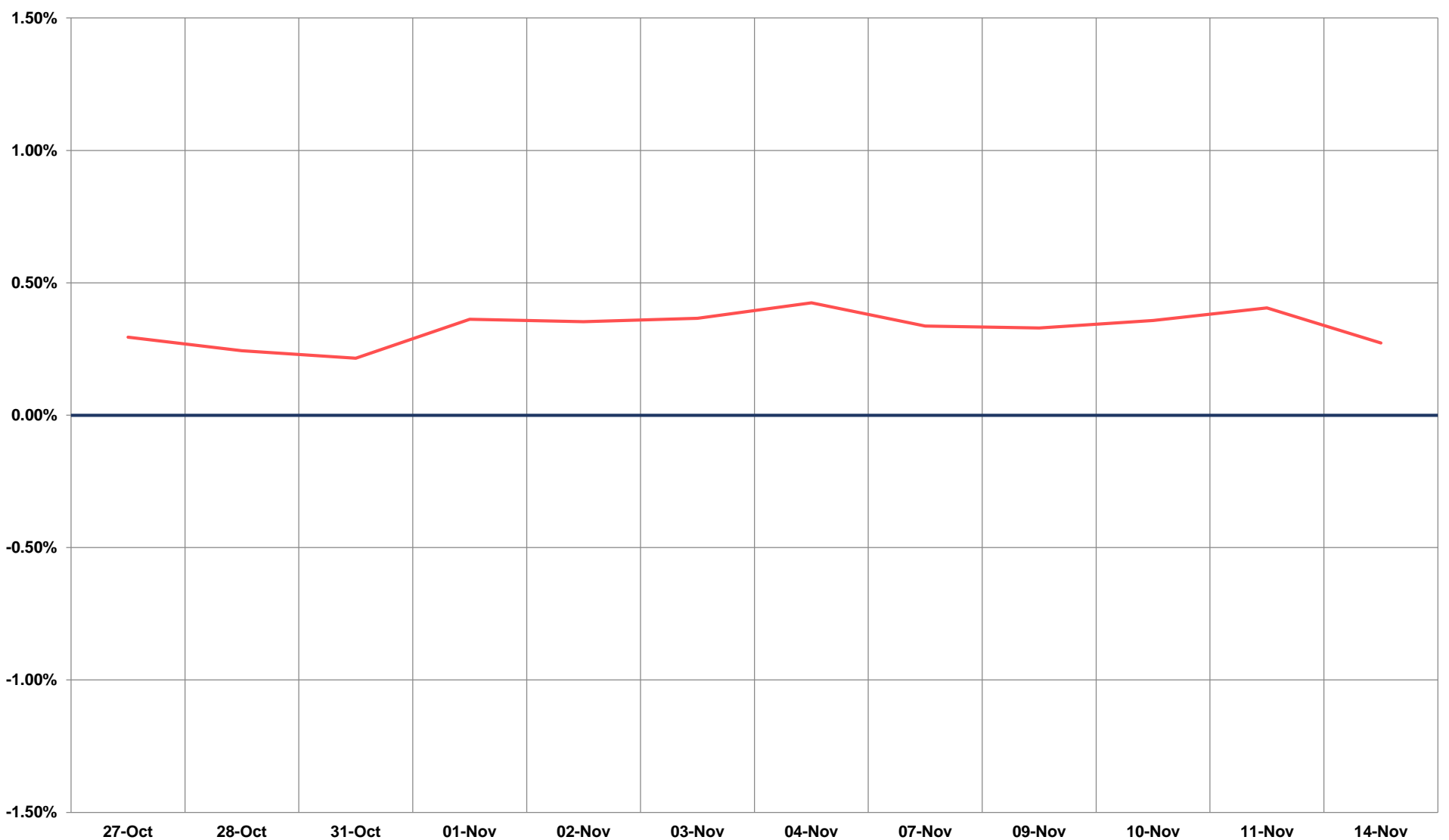
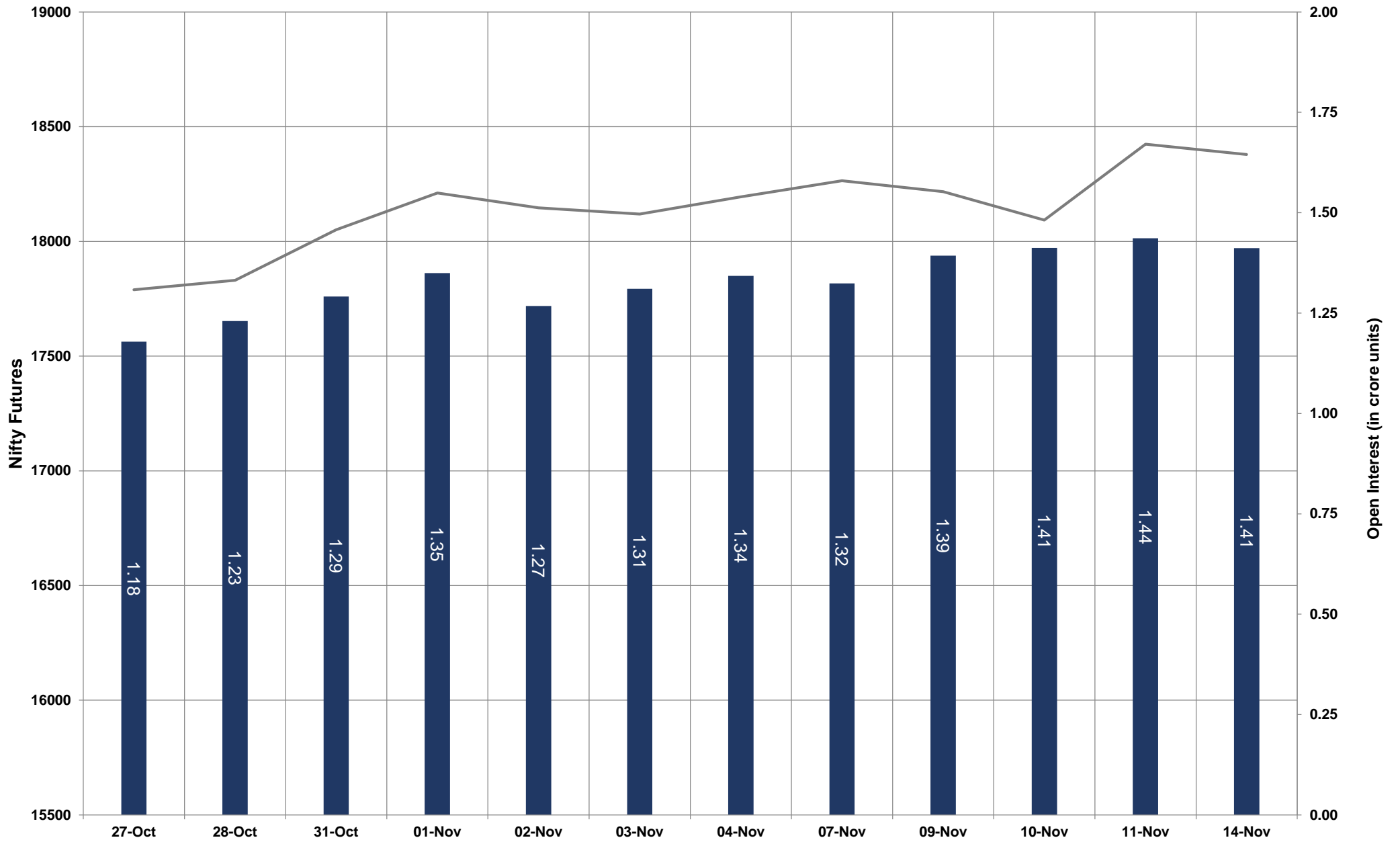


- Nifty Cash = **18329.15 (-0.11%)**
- Resistance levels = **18500** and **18580**
- Support levels = **18220** and **18050**

# TECHNICAL VIEWS



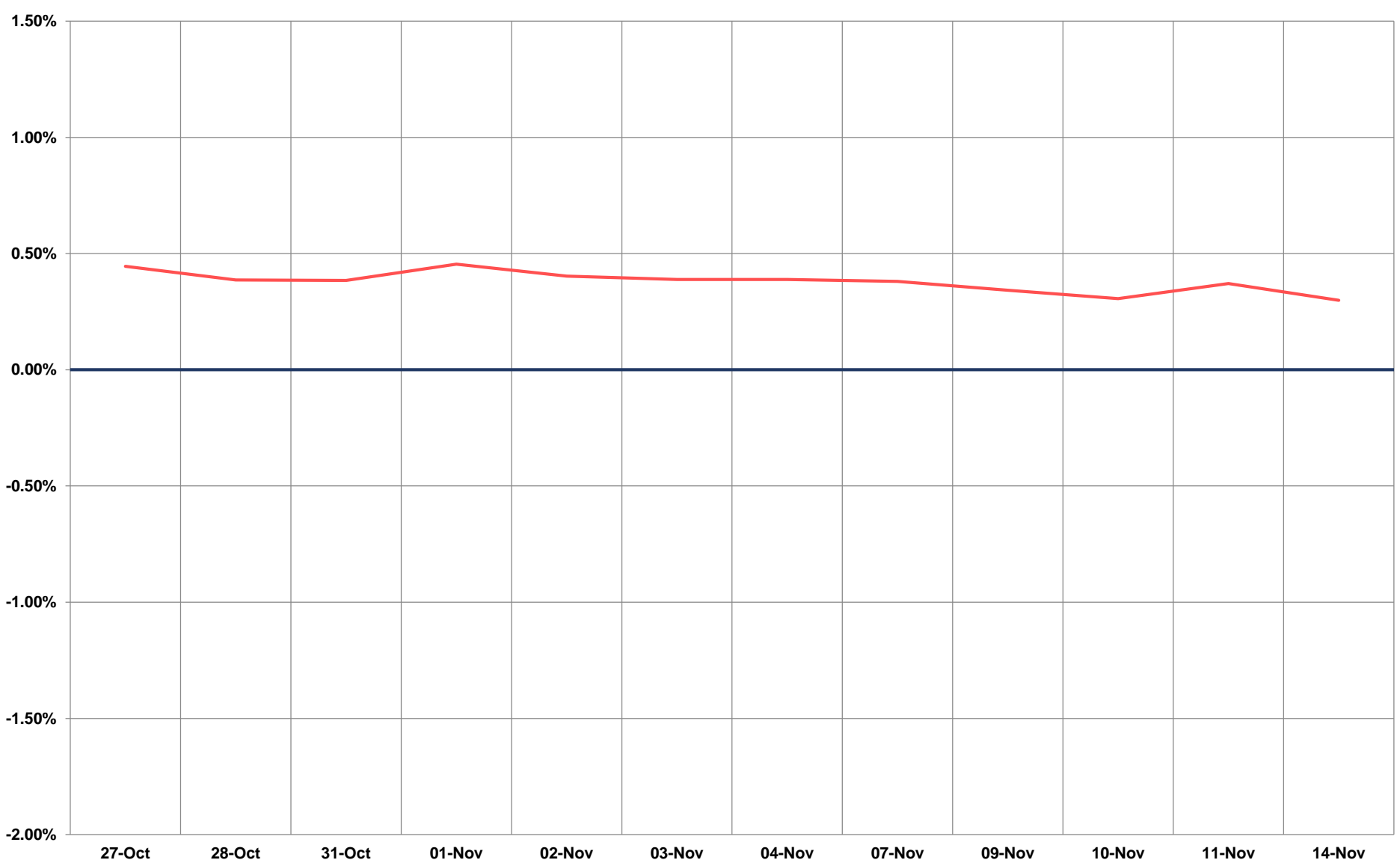
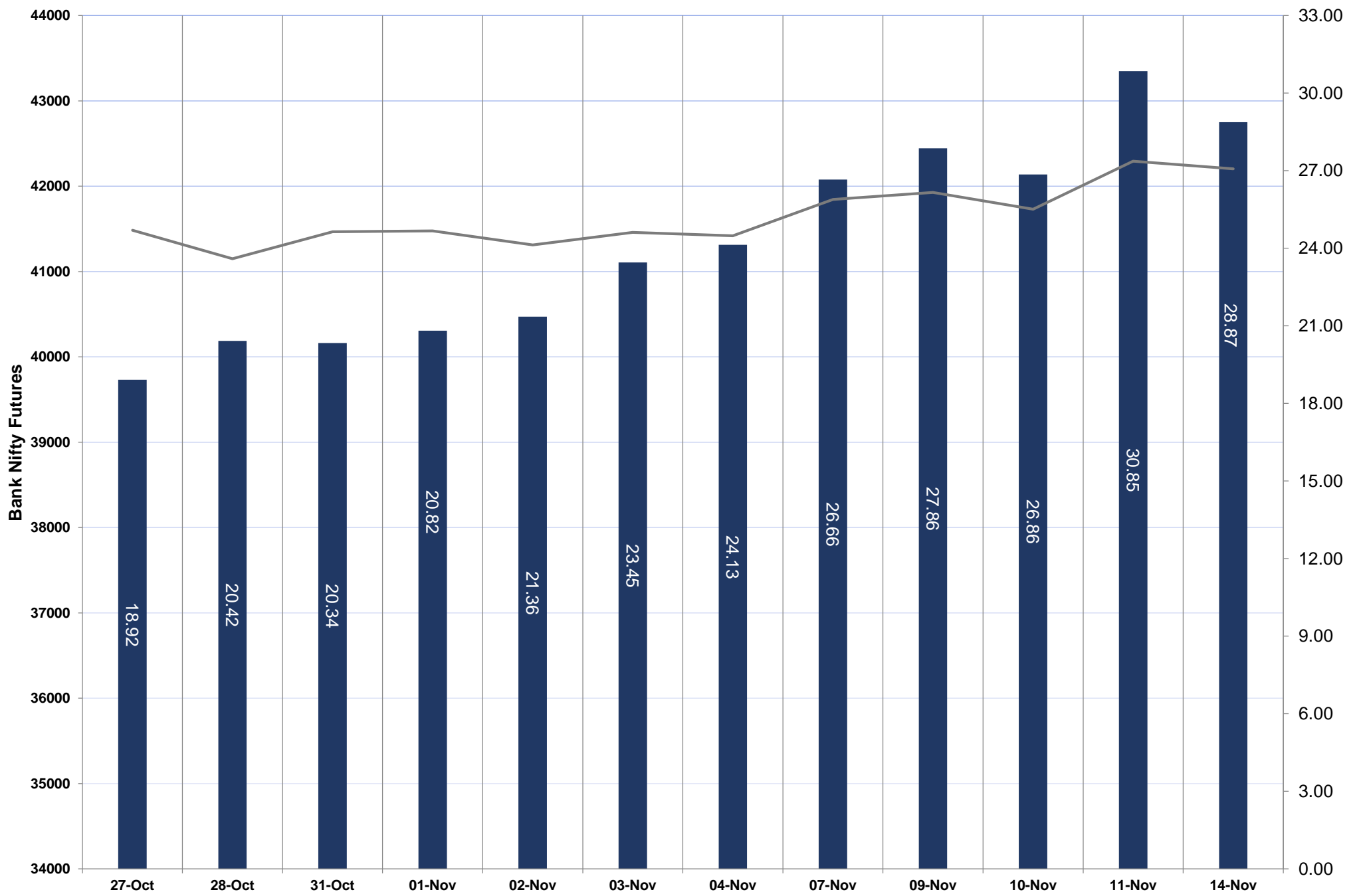
## NIFTY FUTURES



# TECHNICAL VIEWS



## BANK NIFTY FUTURES

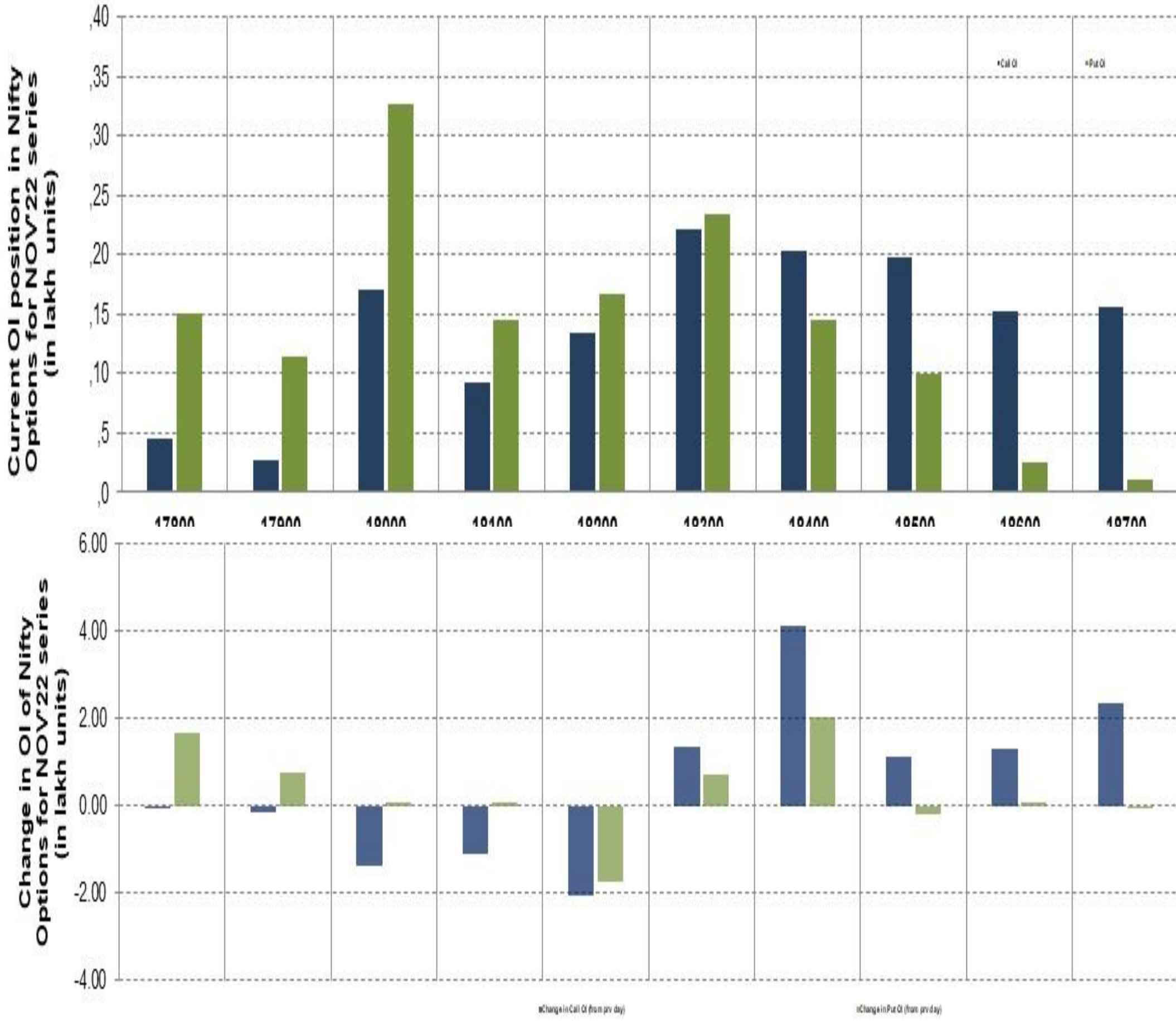




# TECHNICAL VIEWS



## NIFTY OPTIONS



- **Most Active Nifty Call** with an addition of 0.41 million in Open Interests is **Strike Price of 18400**
- **Most Active Nifty Put** with an addition of 0.20 millions in Open Interests is **Strike Price of 18400**
- **Maximum Open Interest an outstanding** was **2.21 millions** for Calls at **Strike Price of 18300**
- **Maximum Open Interest an outstanding** was **3.26 millions** for puts at **Strike Price of 18000**

# Disclaimer



The Information provided by SMS or in newsletter or in any document has been prepared by Shah Investor's Home Ltd (SIHL). The Information provided by SMS or in newsletter does not constitute an offer or solicitation for the purchase or sale of any financial instrument or as an official confirmation of any transaction. The information contained herein is from publicly available data or other sources believed to be reliable, but we do not represent that it is accurate or complete and it should not be relied on as such. SIHL or any of its affiliates/ group companies shall not be in any way responsible for any loss or damage that may arise to any person from any error in the information contained in this report or SMS. This Information provided by SMS, reports or in newsletter is provided for assistance only and is not intended to be and must not alone be taken as the basis for an investment decision. The user assumes the entire risk of any use made of this information. Each recipient of this Information provided by SMS, report or in newsletter should make such investigation as it deems necessary to arrive at an independent evaluation of an investment in the securities of companies referred to in this information provided by SMS, report or in newsletter (including the merits and risks involved), and should consult his own advisors to determine the merits and risks of such investment. The investment discussed or views expressed may not be suitable for all investors. This information is strictly confidential and is being furnished to you solely for your information.

The information should not be reproduced or redistributed or passed on directly or indirectly in any form to any other person or published, copied, in whole or in part, for any purpose. The information provided by report or SMS is not directed or intended for distribution to, or use by, any person or entity who is a citizen or resident of or located in any locality, state, country or other jurisdiction, where such distribution, publication, availability or use would be contrary to law, regulation or which would subject SIHL and affiliates/ group companies to any registration or licensing requirements within such jurisdiction. The distribution of this Information provided by SMS or in newsletter in certain jurisdictions may be restricted by law, and persons in whose possession this Information provided by SMS or in newsletter comes, should inform themselves about and observe, any such restrictions. The information given or Information provided by SMS, report or in newsletter is as of the date of the issue date of report or the date on which SMS provided and there can be no assurance that future results or events will be consistent with this information. This information is subject to change without any prior notice. SIHL reserves the right to make modifications and alterations to this statement as may be required from time to time. However, SIHL is under no obligation to update or keep the information current.

Nevertheless, SIHL is committed to providing independent and transparent recommendation to its client and would be happy to provide any information in response to specific client queries. Neither SIHL nor any of its affiliates, group companies, directors, employees, agents or representatives shall be liable for any damages whether direct, indirect, special or consequential including lost revenue or lost profits that may arise from or in connection with the use of the information. Past performance is not necessarily a guide to future performance. The disclosures of interest statements incorporated in the Information provided by SMS, report or in newsletter are provided solely to enhance the transparency and should not be treated as endorsement of the views expressed in the report. The analyst for this report certifies that all of the views expressed in this report accurately reflect his or her personal views about the subject company or companies and its or their securities, and no part of his or her compensation was, is or will be, directly or indirectly related to specific recommendations or views expressed in this report.